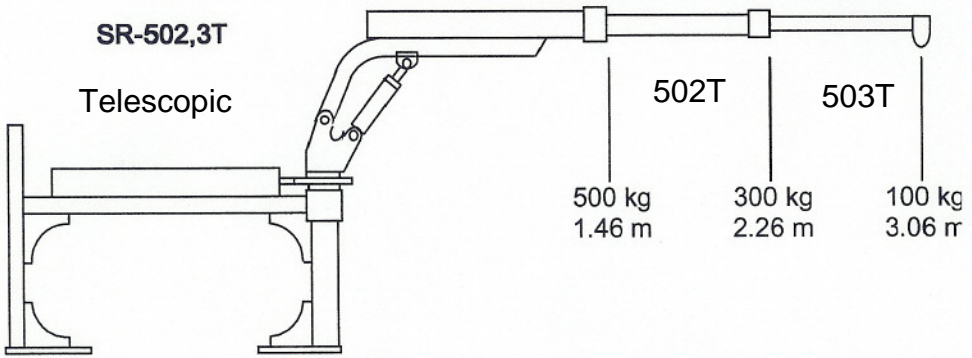
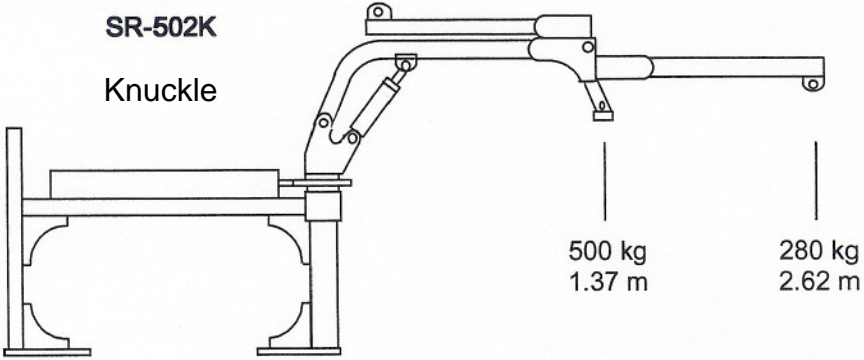
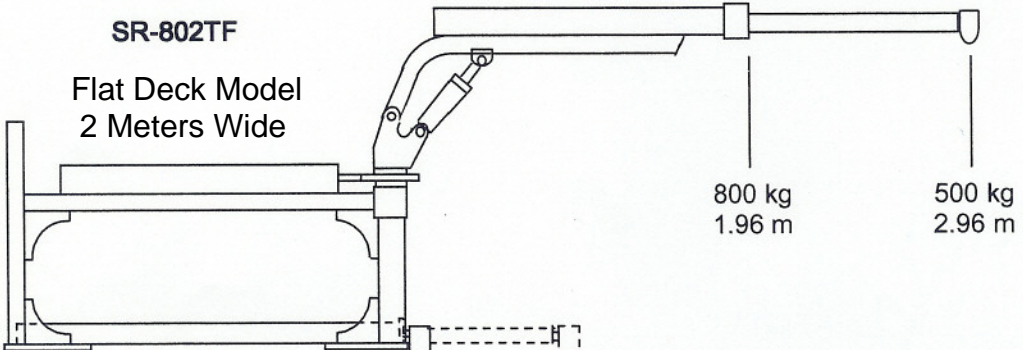


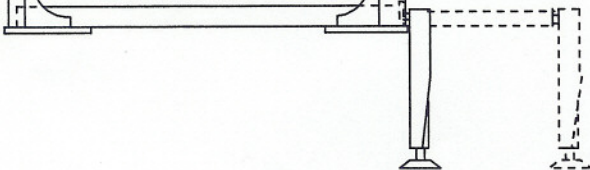
# ✳ Lifting Capacity



## Power Extension Standard



## Fold Up Outrigger Standard



# SPECIFICATION

Description		Unit	SR 502K	SR 502T	SR 503T	SR 802TF
Capacity	Max. Lifting Capacity	kg	500	500	500	800
	Max. Working Radius	m	2.62	2.26	3.06	2.96
	Lifting Capacity	kg/m	500/1.37 280/2.26	500/1.46 300/2.26	500/1.46 300/2.26 100/3.06	800/1.96 500/2.96
Boom	Type/Section		Knuckle/Manual	Telescopic Manual	Telescopic Manual	Telescopic Manual
	Section		2	2	3	2
	Raising Speed	°/sec	-5~75°/26	-5~75°/26	-5~75°/30	-5~75°/30
Slewing	Type		Power Rotation	Power Rotation	Power Rotation	Power Rotation
	Range	°	180°	180°	180°	180°
Hydraulic System	Pump Capacity	cc/rev	0.3cc/rev	0.3cc/rev	0.8cc/rev	0.8cc/rev
	Pressure	bar	210bar	210bar	210bar	210bar
	Oil Tank Capacity	ℓ	2ℓ	2ℓ	6ℓ	6ℓ
	Driven Power		DC12 V	DC12 V	DC12 V	DC12 V